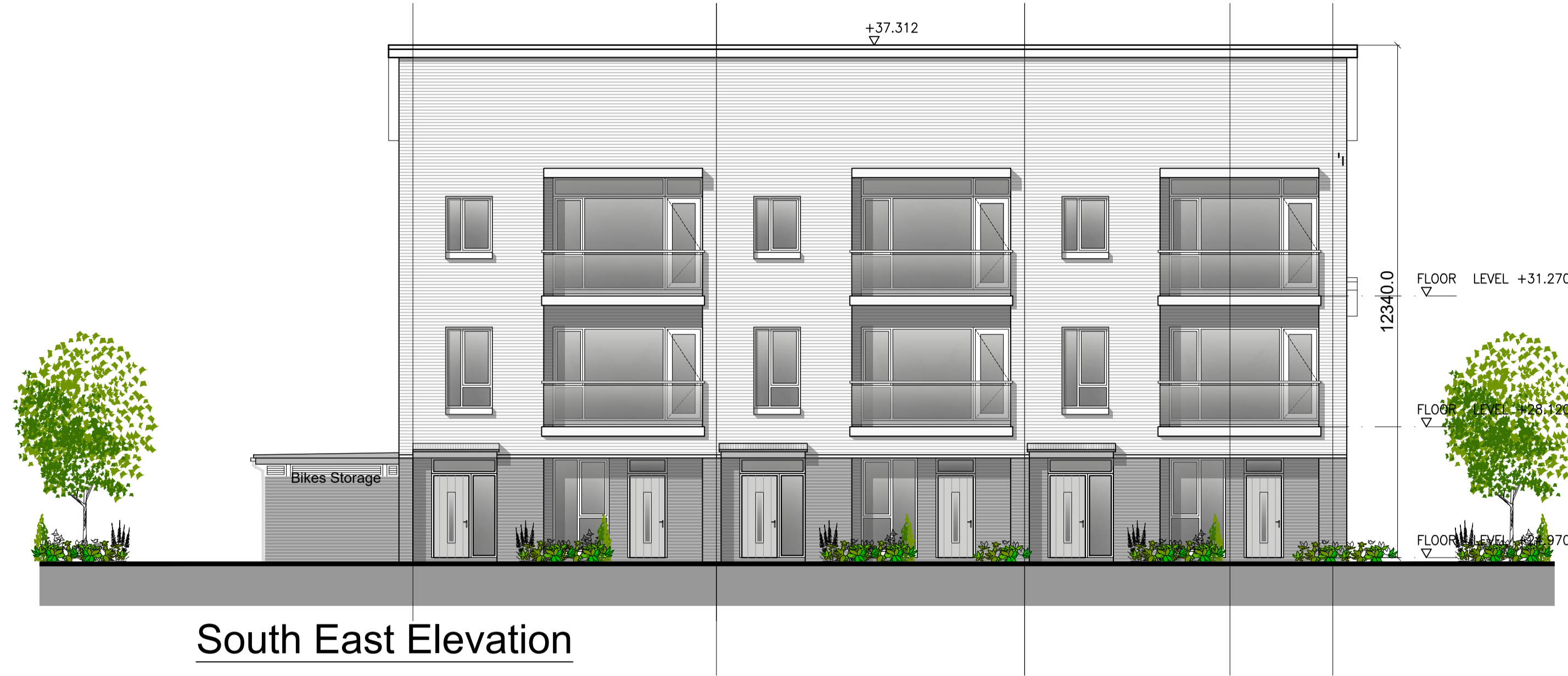


Block 7

GROUND FLOOR PLAN & SOUTH EAST ELEVATION



South East Elevation

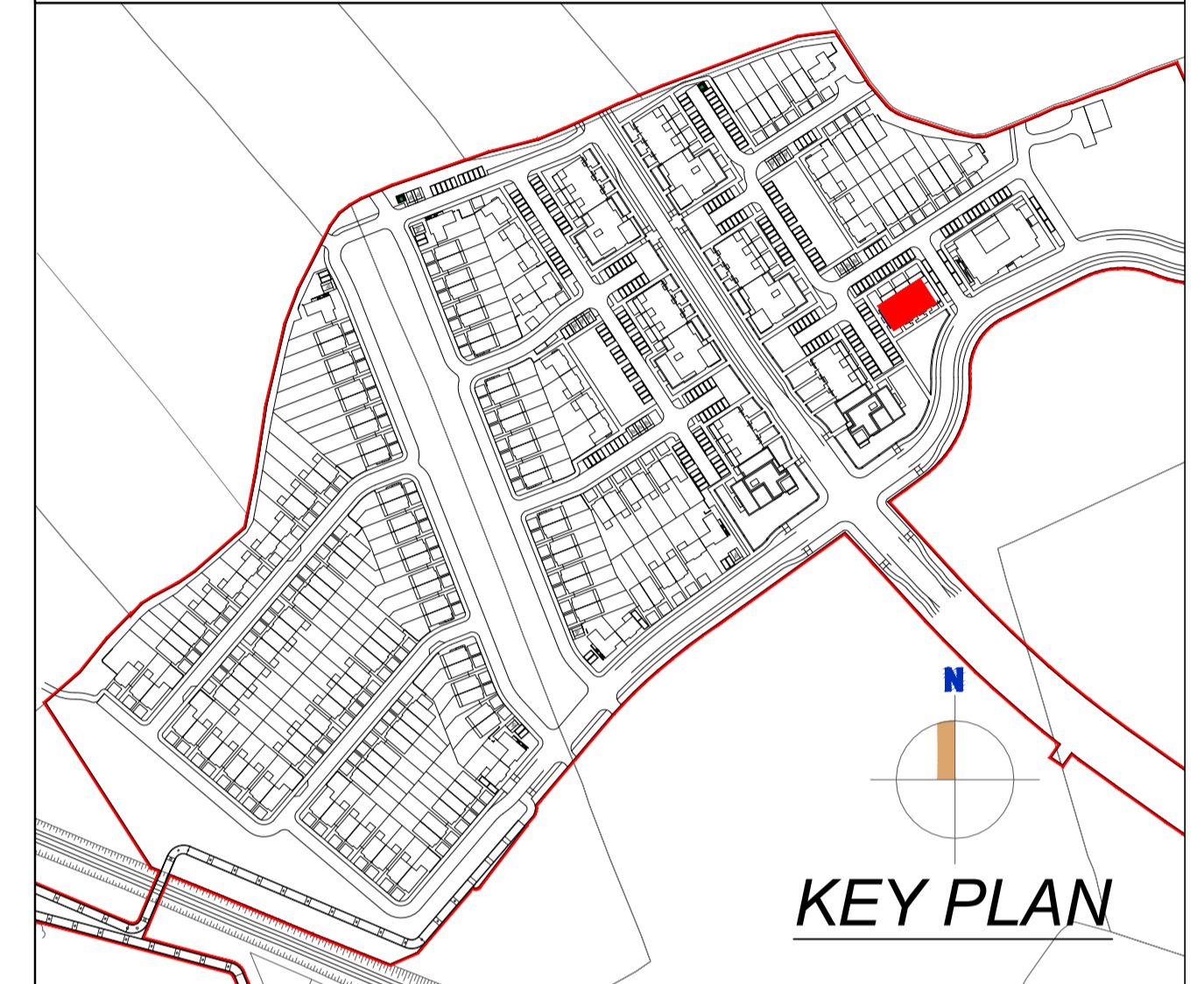


Ground Floor Plan

NOTE:
Do not scale from this drawing, written dimensions only to be used. This drawing is for planning purposes only & not for construction. Levels shown are for information purposes only & may not relate to O.S. Malin Head Datum.
For actual O.S. Malin Head Datum always refer to the Site Layout Plan.
DDA Architects Ltd. retain copyright and ownership of this design which is not transferable.

MATERIALS :

- ROOF** SELECTED STANDING SEAM ROOF FINISH/
SEDUM ROOF
- WALLS** SELECTED BRICK OR SELF COLOUR RENDERED BLOCK WORK,
SELECTED STONE PANEL FINISH
SELECTED ZINC COATED ALUMINIUM WALL PANEL.
- WINDOWS** SELECTED U-PVC OR TIMBER DOUBLE GLAZED WINDOWS.
- FRONT DOOR** SELECTED U-PVC OR TIMBER FINISH DOOR WITH DOUBLE
GLAZED VISION PANELS.
- RAIN WATER GOODS** U-PVC OR TIMBER FASCIA AND SOFFIT WITH UPVC OR
ALUMINIUM POWDER COATED GUTTERS & DOWNPIPES
- CANOPY** ALUMINIUM CLAD CANOPY.
- COPINGS, WINDOW SURROUNDS & CILLS** CONCRETE CILLS WITH WRAP AROUND D.P.C. AND
INSULATION BEHIND.



Block 07 6 No. Own Door Duplex

APARTMENT TYPE	TARGET GROSS FLOOR AREA	AGGREGATE LIVING AREA	AGGREGATE BEDROOM AREA	STORAGE	AMENITY SPACE
Reg 3 Bed Apt.	90 m ²	34 m ²	31.5 m ²	9 m ²	9 m ²
Duplex Type D3	109 m ²	34.3 m ²	36.1 m ²	9 m ²	17.9 m ²
Reg 3 Bed Apt.	90 m ²	34 m ²	31.5 m ²	9 m ²	9 m ²
Duplex Type D4	129 m ²	41.4 m ²	40.4 m ²	10 m ²	11.6 m ²

REV	DATE	DESCRIPTION	DRAWN
-	-	-	-
-	-	-	-
-	-	-	-
-	-	-	-
-	-	-	-
-	-	-	-
-	-	-	-
-	-	-	-
-	-	-	-

DDA DUIGAN DOOLEY
ARCHITECTS AND PLANNING CONSULTANTS

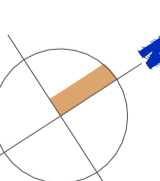
62 BRIGHTON SQUARE, DUBLIN 6

TEL: 00 353 (1) 490 0499

EMAIL: info@ddaarch.ie

WEB: www.ddaarch.ie

RIA



THIS DRAWING IS COPYRIGHT © FIGURED DIMENSIONS ONLY TO BE USED		STATUS	CLIENT	PROJECT TITLE	CD
		PLANNING	SHANNON HOMES DROGHEDA LTD	COLP WEST SHD DROGHEDA	PD
DRAWING TITLE: BLOCK 7 Ground Floor Plan & South East Elevation		DRAWING NUMBER: 19-001-P-3.700			
DRAWN: BC	CD: PD	DATE: OCT 2019	SCALE: 1:100@A1; 1:200@A3		